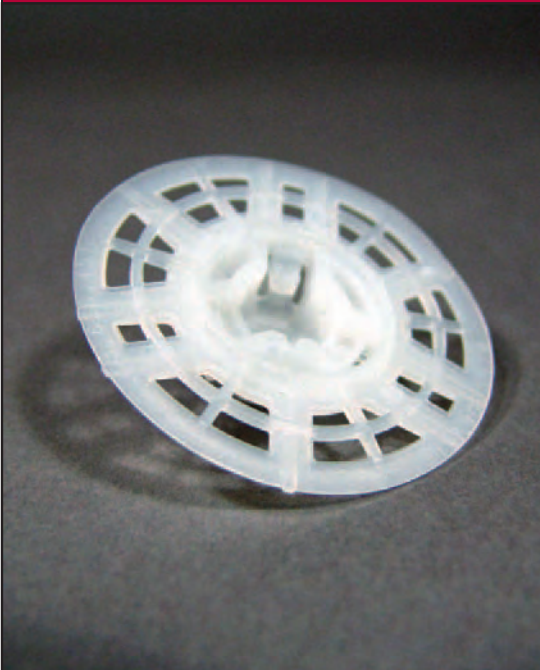




Wind-Devil[®] 2

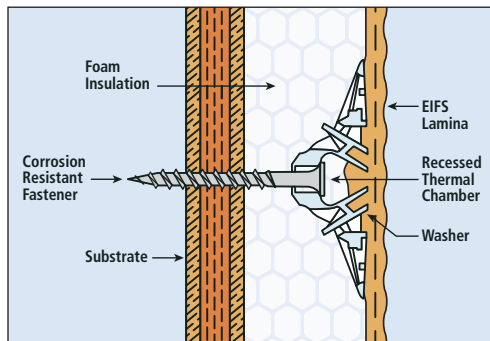
Fastening System



The original and industry-leading, two-inch-diameter fastener, the Wind-Devil 2 system is by far the most popular and technologically advanced EIFS mechanical fastening system on the market. The patented "bullseye" closure arms create a thermal chamber to protect the EIFS lamina and allow easy, efficient backing out of any screw, whenever necessary, saving valuable time and money.

PRODUCT FEATURES

- ▶ The original and best EIFS fastener since 1985
- ▶ ASTM E330 rated for highest quality assurance
- ▶ Fastener and plate assemblies for wood, lite metal, steel and masonry
- ▶ Perfect for overhead application
- ▶ All weather application -20°F to +120°F; it works when you can't



Installation of the Wind-Devil 2 fastener compresses the foam under the washer, forming a "gasket" around the fastener. This gasketing action diverts moisture from the fastener.

WHY THE WIND-DEVIL 2 IS BEST!

- Comprehensive witness testing
- Over 20 years of proven performance
- EIFS manufacturers and industry approved
- Significant negative wind-load resistance
- Recessed thermal chamber prevents thermal bridging
- Patented closure arms allow for easy "backing" out
- Saves a day of labor. You can apply the base coat and mesh on the same day.



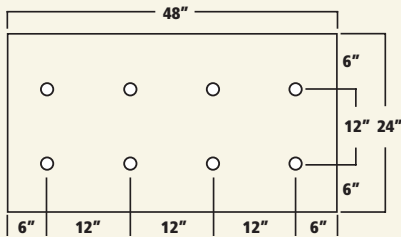
1055 Leisch's Bridge Road • Leesport, PA 19533
610-926-6815 • 1-800-872-5625 • Fax: 1-800-854-6614
www.wind-lock.com



Wind-Devil[®] 2

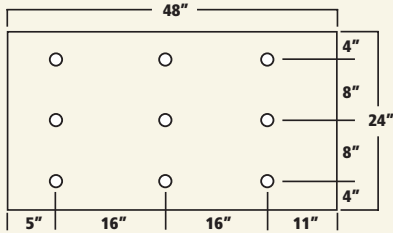
Fastening System

TYPICAL WIND-DEVIL 2 FASTENING PATTERNS



PATTERN A:

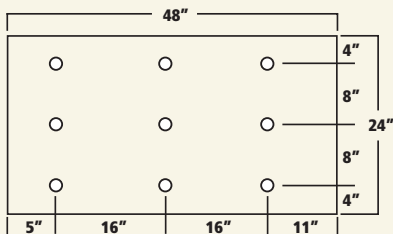
Wood sheathing, masonry and some metal sidings.



PATTERN B:

16" o.c. stud fastening pattern.

Note: For pattern "B" stud fastening over non-screwable sheathing, fastener spacing does not exceed 16" o.c. variable not to exceed 11".



PATTERN C:

Wood sheathing, masonry and some metal sidings.

WIND-DEVIL 2 ORDERING INFORMATION

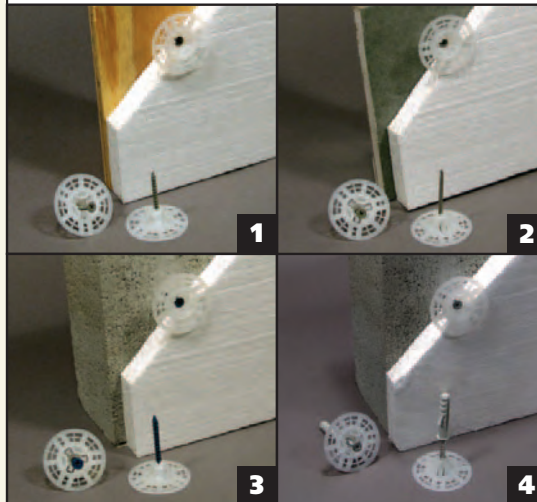
| Insulation Thickness | Wood/Lite Metal Series | Steel Series | Masonry Series |
|----------------------|------------------------|--------------|----------------|
| 1" | WLMT-1 | ST-1* | MT-1 |
| 1-1/2" | WLMT-2 | ST-2* | MT-2 |
| 2" | WLMT-3 | ST-3* | MT-3 |
| 2-1/2" | WLMT-4 | ST-4* | MT-4 |
| 3" | WLMT-5 | ST-5* | MT-5 |
| 3-1/2" | WLMT-7 | ST-6* | |
| 4" | WLMT-7 | ST-7* | |
| 4-1/2" | WLMT-7 | ST-7* | |
| 5" | WLMT-8 | ST-8* | |
| 5-1/2" | WLMT-8 | ST-8* | |

For virtually any size fastener, contact Wind-lock[®]

*Sizes are for direct application into steel and do not take into account the sheathing. For 1/2" and 5/8" sheathing, move fastener selection to next higher size.

WIND-DEVIL 2 APPLICATIONS

1. Wood and Lite Metal Series
2. Steel Series
3. Masonry Series
4. Masonry Expandable Series



Wind-lock[®] Distributed by:
Your faithful business companion